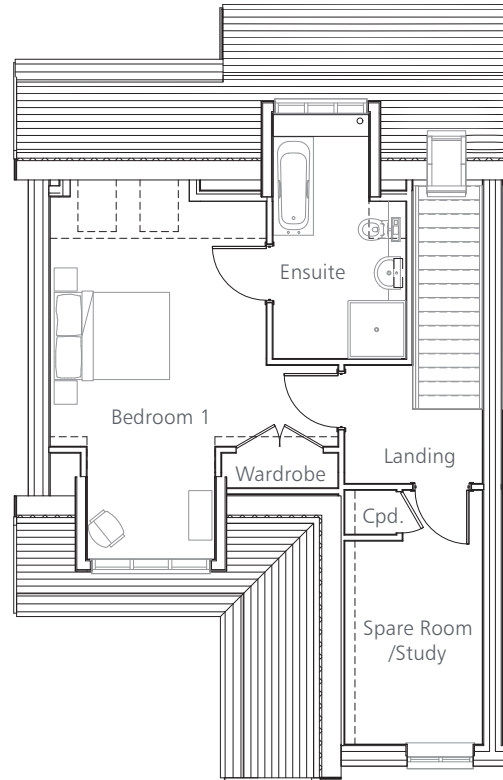
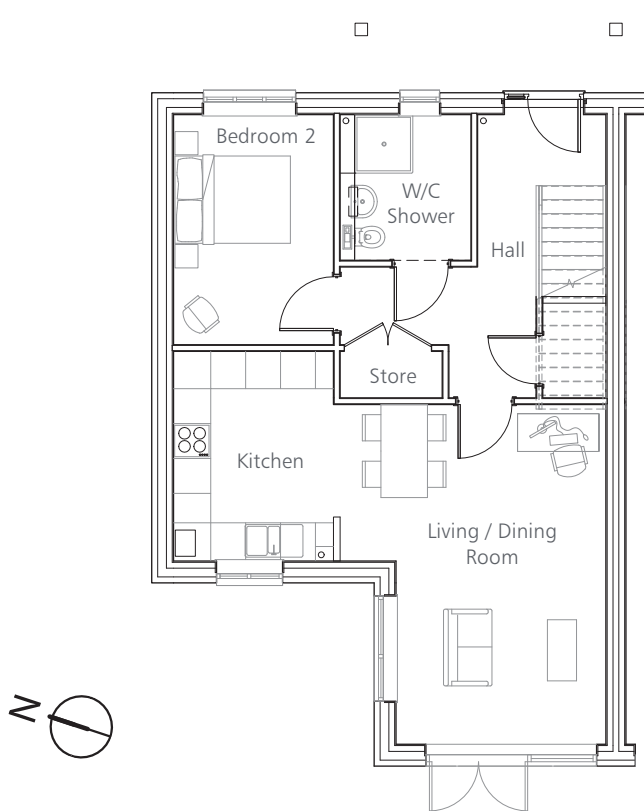


Gradwell Park floorplans

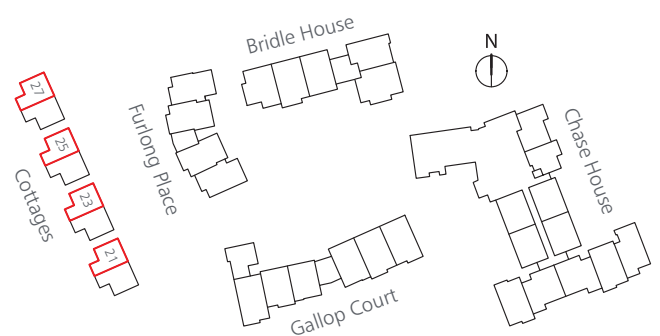


COTTAGES

Two bedroom cottages

1311.5 SQ. FT (121.84 M²)

21, 23, 25 & 27 Gradwell End
NHBC Plot No's 7, 5, 3 & 1



Living Room	5.84m x 3.61m	19'2" x 11'10"
Kitchen	3.60m x 2.75m	11'10" x 9'0"
Bedroom 1	6.23m x 3.72m	20'5" x 12'2"
En Suite	4.18m x 2.41m	13'9" x 7'11"
Bedroom 2	3.96m x 2.75m	13'0" x 9'0"
Bathroom	2.49m x 2.23m	8'2" x 7'4"
Spare Room / Study	3.50m x 2.37m	11'6" x 7'9"