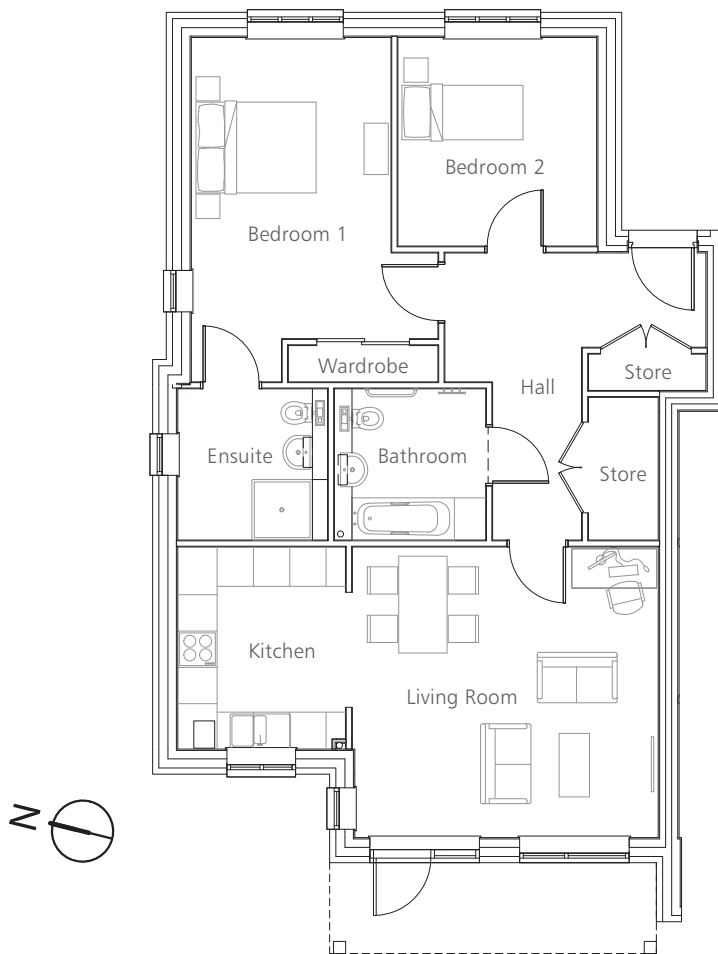


Gradwell Park floorplans

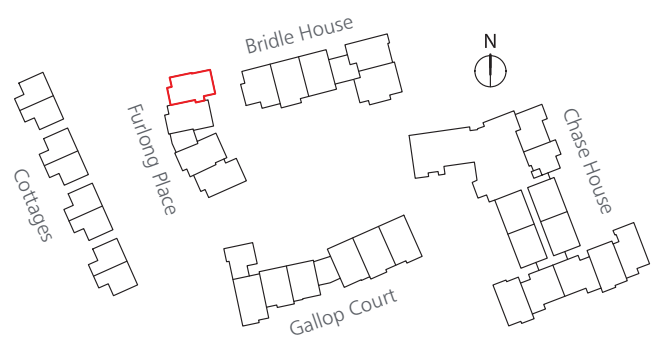


FURLONG PLACE

Two bedroom apartment
Ground Floor

1050.13 SQ. FT (97.56 M²)

4 Furlong Place
NHBC Plot No: 9



Living Room	5.06m x 4.80m	16'7" x 15'9"
Kitchen	2.77m x 3.34m	9'1" x 10'11"
Bedroom 1	3.30m x 4.98m	10'10" x 16'4"
Ensuite	2.46m x 2.48m	8'1" x 8'1"
Bedroom 2	3.28m x 3.45m	10'9" x 11'4"
Bathroom	2.48m x 2.48m	8'1" x 8'1"