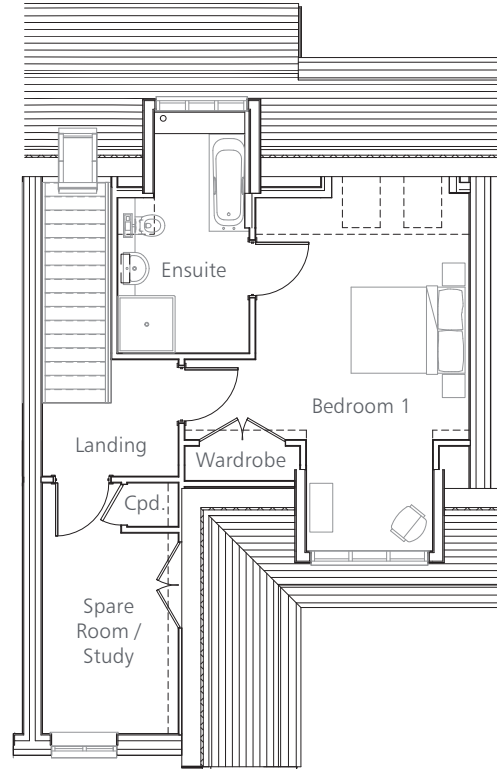
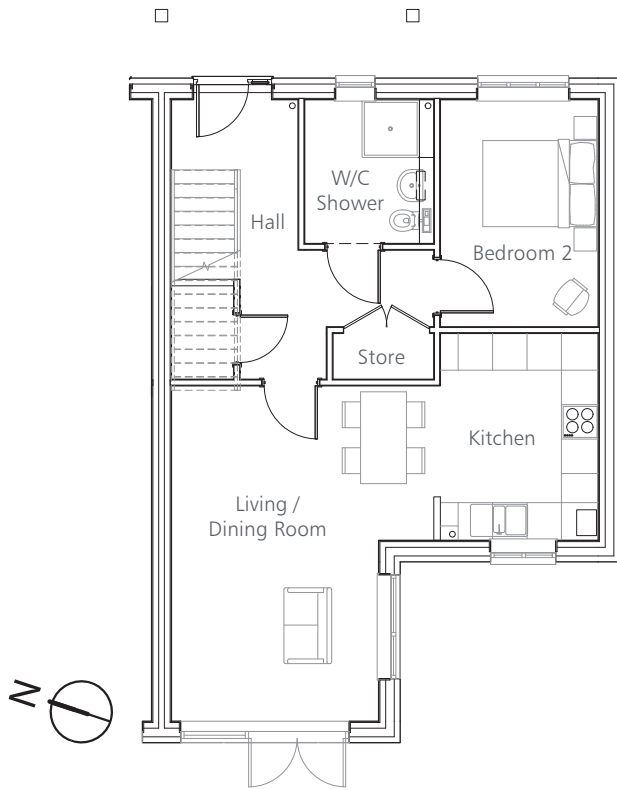


Gradwell Park floorplans



COTTAGES

Two bedroom cottages

1311.5 SQ. FT (121.84 M²)

20, 22, 24 & 26 Gradwell End
NHBC Plot No's 8, 6, 4 & 2



Living Room	5.84m x 3.61m	19'2" x 11'10"
Kitchen	3.61m x 2.75m	11'10" x 9'0"
Bedroom 1	6.16m x 3.72m	20'2" x 12'2"
En Suite	4.18m x 2.28m	13'9" x 7'6"
Bedroom 2	3.96m x 2.75m	13'0" x 9'0"
Bathroom	2.49m x 2.23m	8'2" x 7'4"
Spare Room / Study	3.50m x 2.37m	11'6" x 7'9"

